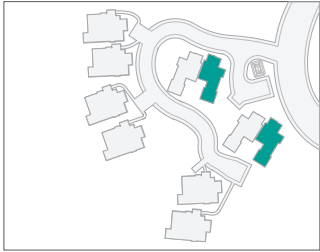


# THREE BEDROOM - MODEL C

BEDROOMS: 3  
BATHROOMS: 2.5  
INTERIOR: 2,067 sq. ft. | 192 m<sup>2</sup>  
TERRACES: 861 sq. ft. | 80 m<sup>2</sup>  
TOTAL: 2,928 sq. ft. | 272 m<sup>2</sup>



**THE TERRACES**  
AT SAN MARTÍN



MARKER 170KM - JUST SOUTH OF UVITA | COSTANERA SUR - HIGHWAY 34 | BAHIA BALLENA, COSTA RICA

T. +506.4001.2343 | E. [info@TerracesSanMartin.com](mailto:info@TerracesSanMartin.com) | [TerracesSanMartin.com](http://TerracesSanMartin.com)

IN AN EFFORT TO CONTINUOUSLY IMPROVE OUR RESIDENTIAL PRODUCTS, AXIOM DEVELOPMENT GROUP RESERVES THE RIGHT TO CHANGE OR MODIFY PLANS, MATERIALS AND SPECIFICATIONS WITHOUT NOTICE. VARIATIONS IN FLOOR PLANS AND DRAWINGS DO EXIST AND ARE APPROXIMATIONS. ALL AREAS ARE APPROXIMATIONS AND ARE BASED ON ARCHITECTURAL MEASUREMENTS FROM PRELIMINARY DRAWINGS. RENDERINGS AND MAPS ARE ARTIST'S CONCEPTIONS AND MAY DIFFER FROM THE FINISHED PRODUCT. THIS IS NOT AN OFFERING FOR SALE IN ANY JURISDICTION WHERE THE PROJECT IS NOT REGISTERED.

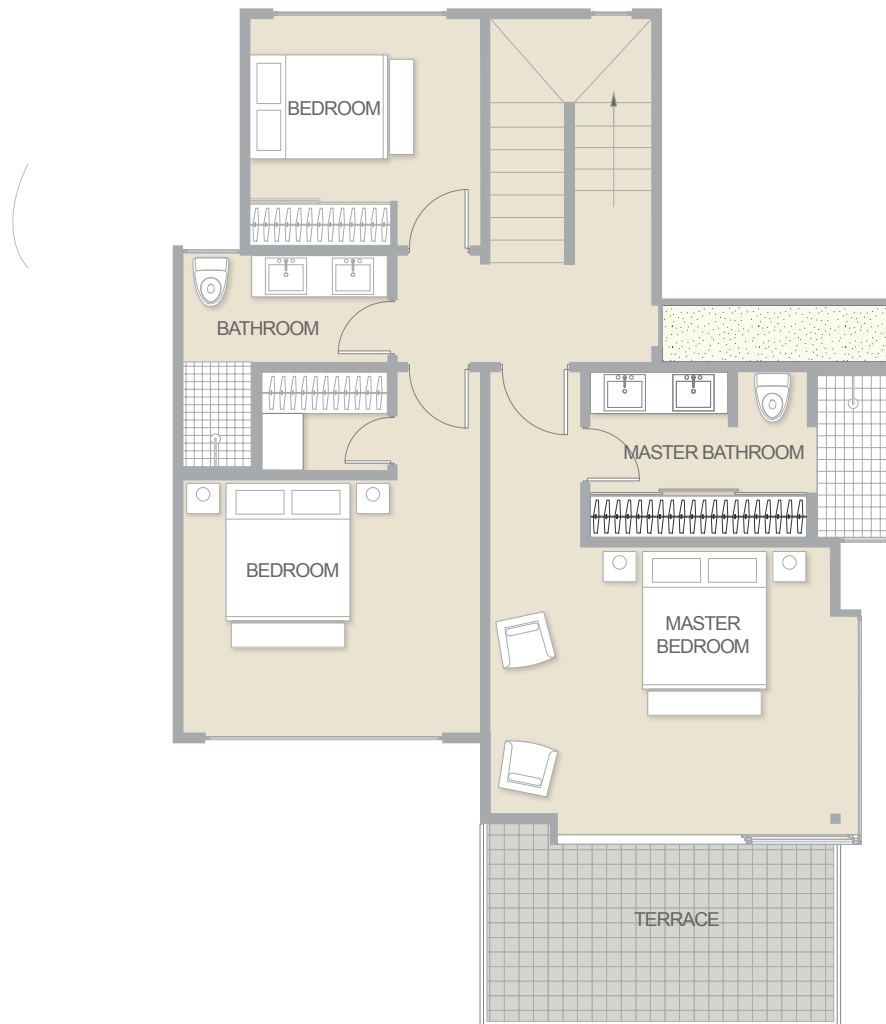
# THREE BEDROOM - MODEL C

BEDROOMS: 3  
BATHROOMS: 2.5  
INTERIOR: 2,067 sq. ft. | 192 m<sup>2</sup>  
TERRACES: 861 sq. ft. | 80 m<sup>2</sup>  
TOTAL: 2,928 sq. ft. | 272 m<sup>2</sup>



**THE TERRACES**  
AT SAN MARTÍN

## SECOND FLOOR



MARKER 170KM - JUST SOUTH OF UVITA | COSTANERA SUR - HIGHWAY 34 | BAHIA BALLENA, COSTA RICA

T. +506.4001.2343 | E. info@TerracesSanMartin.com | TerracesSanMartin.com

IN AN EFFORT TO CONTINUOUSLY IMPROVE OUR RESIDENTIAL PRODUCTS, AXIOM DEVELOPMENT GROUP RESERVES THE RIGHT TO CHANGE OR MODIFY PLANS, MATERIALS AND SPECIFICATIONS WITHOUT NOTICE. VARIATIONS IN FLOOR PLANS AND DRAWINGS DO EXIST AND ARE APPROXIMATIONS. ALL AREAS ARE APPROXIMATIONS AND ARE BASED ON ARCHITECTURAL MEASUREMENTS FROM PRELIMINARY DRAWINGS. RENDERINGS AND MAPS ARE ARTIST'S CONCEPTIONS AND MAY DIFFER FROM THE FINISHED PRODUCT. THIS IS NOT AN OFFERING FOR SALE IN ANY JURISDICTION WHERE THE PROJECT IS NOT REGISTERED.